



HOMM  
FLAT

# ABOUT FLAT

FLAT is a complete single-storey small house.

Two people can live permanently in this cleverly designed house, while a family of three or four will be able to comfortably spend a weekend in it.

In this HOMM model you will find all the equipment for comfortable living: kitchen appliances, shower and bathroom, heating and ventilation systems, smart house control and LED lighting. All equipment and appliances are supplied by reliable manufacturers that provide warranties throughout all of Europe.

Cleverly arranged utilities will make your HOMM one of the most cost-efficient houses on the market and will allow you to save 25-30% on your electricity costs.

All of this will allow you to live comfortably. A large terrace will bring you closer to nature. A clever layout of large windows and blind side façade connect internal spaces of FLAT with its surroundings, while allowing you to maintain your privacy.

A cleverly designed layout of FLAT will be perfect if you are planning to develop a small plot of land. It will allow you to build four to six or even more houses on one small plot without loss of privacy, light or outlook on neighbours. FLAT is a great choice for both, permanent residence and as a summer house/guest house.

## WHAT MAKES HOMM SPECIAL



### Thermowood exterior cladding

No need to repaint, reoil – exterior doesn't need any care for decades!  
100% ecofriendly.



### Aluminum (3 glass layers) window frame

Warm, strong and longlasting.



### Carbon floor heating system with wi-fi thermostat

You will be able to control Your heating system despite of being far away!



### Natural OAK flooring

Special construction for heated floors.



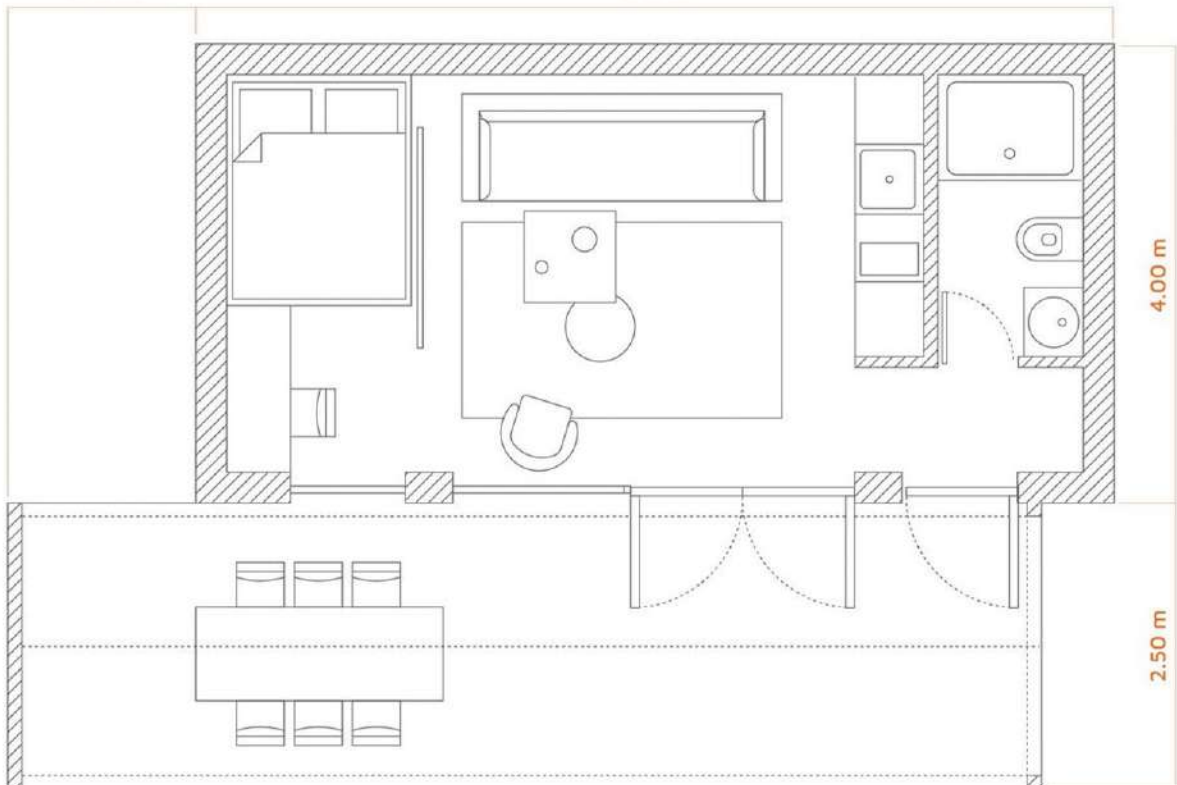
### Highly efficient heat recovery ventilation system

With SMART controllers.



### Smart house system

Controls lighting, air ventilation, heating systems and more.



## GENERAL INDICATORS

### 1. Building type

Modular building

### 2. Parameters

No. of people in house:

**2** (permanent living) **or 4** (sleeping overnight)

**800 cm** (length) X **400 cm** (width) X **350 cm** (height);

Building area (outer perimeter): **32,00 m<sup>2</sup>** (without terrace)

Floor area: **25,17 m<sup>2</sup>** (without entresol);

Terrace area – **22,50 m<sup>2</sup>**;

Inner height – **280 cm** (from floor to ceiling).

### 3. Weight

Standard: **9.900 Kg**

(empty, with inside and outside decorations, without terrace)

With interior equipment: **13.150 Kg**

Indicator can differ +/- 5%

### 4. Thermal resistance

- Walls:  $U = 0,15 \text{ W/ m}^2 \text{ K}$

- Roof:  $U = 0,14 \text{ W/ m}^2 \text{ K}$

Given minimal indicators.

## CONSTRUCTION DETAIL DESCRIPTION

### 5. Walls

Dried, calibrated wood (45x145+45x45) support construction is filled with Knauf mineral wool NATURBOARD 35  $\lambda D[W/mK]=0,035$  (ecofriendly) (20cm). Covered with wind resistant plate "Knauf GTS-9". The construction piece is full of thermal film and special rupture resistant "Knauf Diamant" plate. Outside interior – 125x26 mm A class pine tree siding (thermowood).

### 6. Roof

Dried, calibrated wood (45X245) support construction has an air gap. On top there are 2 layers of "Durelis Popuilar" humidity resistant plate. Thermal insulation – 250 mm NATURBOARD 35  $\lambda D[W/mK]=0,035$  (ecofriendly). The inner side is covered with thermal film, while the outside with wind resistant film ("Dupoint Tyvek"). Roof covering: double layer bitumen heated cover.

### 7. Ceiling

Metal subframe, dried, calibrated wood (45x195) support construction is filled with NATURBOARD 35  $\lambda D[W/mK]=0,035$  (20cm) + "Isover" RKL50 (5cm). Both interior and exterior is supported with 22mm thickness OSB 3 plate. Lower half is water-proof.

### 8. Internal partitions

Dried, calibrated wood (45x75) support construction is filled with mineral wool for acoustic reasons. Supported from inside and outside with "Knauf Diamant" plates.

### 9. Windows

Warm aluminum profile window frames with a double glass packet (three glass layers). Doors with push-down handle, aluminum threshold and can be locked.

### 10. Terrace

The house bottom frame is made from depth method impregnated wood. Terrace is made of coniferous thermowood with grooves and screwed with special conical wood screws. Includes metal subframe.

## INDOOR INTERIOR

### 11. Walls

Plastered (putty) and painted maximum resistant class ceramic base washable matt paint. Color – warm white & dark grey. Bathroom decoration – limestone tiles 600x600 dark grey (matt).

### 12. Ceiling

Plastered (putty) and painted with white matt paint.

### 13. Floor

Natural oak floor deck.

Bathroom decoration – limestone tiles 600x600 dark grey (matt). Antistatic carpet cover on entresol and stairs.

## ENGINEER PARTS

### 14. Electricity

Front panel 12 pcs of 220V power sockets + 2 pcs outside, 5 zone lighting control. Lighting transformers, LED track lighting system. Electric radiator in bathroom, electric ventilator. Carbon fiber floor heating system with programmable regulators (wi-fi control). Made by "ABB", "SIEMENS".

### 15. Sanitary ware / Plumbing

Shower, wash basin, toilet, shower faucet, water heating, ventilation system.

Made by "JIKA", "GROHE" and "LAUFEN".

## FURNITURE

### 16. Furniture

LMDP kitchen furniture with integrated heater and sink, integrated fridge, produced by "IKEA".

Inside stairs, entresol railings. Also included all kitchen equipment.

Made by "SIEMENS", "FRANKE".

## Devices

### 1. Wall lighting

“PHILIPS” LED IP20



### 2. Ceiling lighting

“PHILIPS” LED IP20



### 3. Bathroom lighting

FUEVA 1 5,5W 12X12 3000K

- LED
- Max. 5,5W
- IP20



### 4. Dining area lighting

- LED
- Max. 60W
- Material – metal



### 5. Outdoor lighting

“LUCIDE BOOGY”

- LED
- IP65



### 6. Lighting control

“JUNG”



### 7. Water heater

ARISTON VELIS EVO 80  
Made in Italy



### 8. Towel dryer

“Elonika” EE 370 SLMP



### 9. Heating system

- Carbon Heating Film „Dimat“
- 80W/m<sup>2</sup>;
- Wi-fi control



### 10. Shower doors

JIKA CUBITO PURE 90X195 MATT



### 11. Shower equipment

“GROHE GROHTHERM 800 AND TEMPESTA II”



### 12. Toilet bowl

LAUFEN PRO NORDIC



### 13. Wash basin

LAUFEN PRO S COMPACT 55X38 WITH CABINET



### 14. Faucet

“GROHE BAUEDGE”



### 15. Shower tray

„RAVAK“ GALAXY PERSEUS PRO-90 FLA



### 15. Bathroom ventilation fan

Soler & Palau (SILENT-100 CHZ):

- Ultra-plated exhaust design
- humidity sensor



### 16. Ventilation system

EPVS-200 Electrolux

- adjustable timer



## Kitchen equipment

### 17. Furniture

“IKEA” KNOXHULT 180x61x220 cm

- Complete kitchen, which includes scratch-resistant worktop, shelves, drawers, sink bowl, wash-basin mixer tap and water-trap.
- Smooth-running drawer with drawer stop.



### 18. Hob

“IKEA” MÖJLIG

- Induction hob for your hot meals. 5 year guarantee.



### 19. Oven

“IKEA” GÖRLIG

Electric oven with child-safety door lock. 5 year guarantee.



### 20. Refrigerator

“IKEA” SVALKAS

- 5 year guarantee.
- Fridge with 3 adjustable shelves and a freezer, integrated LED light technology. The door can be opened on the right or left side.

#### Good to know -

Energy consumption: **151 kWh/year**

Net volume fridge: **109 l**

This product bears the CE mark.



### 19. Oven hood

“IKEA” UTDRAK

An extractor hood with all the basic functions you need.





**Any questions?**

Contact us: