



HOMM
STUDIO

ABOUT STUDIO

STUDIO is a special energy-efficient house that can become a cozy home for a family. The modern utility infrastructure in the house will optimize energy consumption at any time of the year.

This cleverly designed house with lofts on both sides is suitable for a family of four for permanent living. However, it is large enough for a group of six for an overnight stay.

STUDIO is a warm house, equipped with everything you need for a year-round permanent living. Manufacturer's warranties are provided for the equipment and appliances throughout all of Europe.

STUDIO may look small from the outside, but due to every detail carefully selected in the designing stages it feels spacious inside. This model is suitable to serve as a holiday home, a summer house or as a permanent residence.

Just like all HOMM models, STUDIO's living room has large doors opening up onto a spacious terrace, extending your living space when the weather is warm.

WHAT MAKES HOMM SPECIAL



Thermowood exterior cladding

No need to repaint, reoil – exterior doesn't need any care for decades!
100% ecofriendly.



Aluminum (3 glass layers) window frame

Warm, strong, and long-lasting.



Carbon floor heating system with wi-fi thermostat

You will be able to control Your heating system despite of being far away!



Natural OAK flooring

Special construction for heated floors.

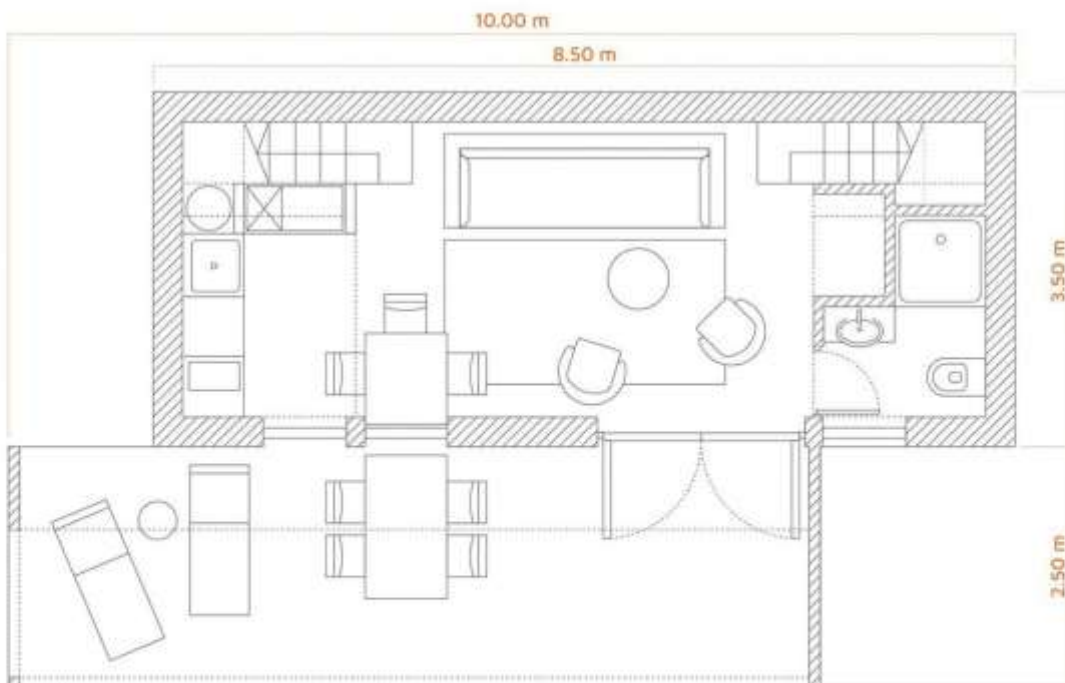


Highly efficient recuperation system



Smart house system

Controls heating system, boiler and door lock.



GENERAL INDICATORS

1. Building type

Modular building

2. Parameters

No. of people in house:

4 (permanent living) **or 6** (sleeping overnight)

850 cm (length) X **350 cm** (width) X **385 cm** (height);
Building area (outer perimeter): **30,00 m²** (without terrace)

Floor area: **20,50 m²** (without entresol);

Floor area: **28,30 m²** (including entresol);

Terrace area – **18,82 m²**.

Inner height – **335 cm** from floor to ceiling,

– **205 cm** from floor to entresol.

3. Weight

Standard: **9.900 Kg**

(empty, with inside and outside decorations, without terrace)

With interior equipment: **13.150 Kg**

Indicator can differ +/- 5%

4. Thermal resistance

• Walls: $U = 0,15 \text{ W/ m}^2 \text{ K}$

• Roof: $U = 0,14 \text{ W/ m}^2 \text{ K}$

Given minimal indicators.

CONSTRUCTION DETAIL DESCRIPTION

5. Walls

Dried, calibrated wood (45x145+45x45) support construction is filled with Knauf mineral wool NATURBOARD 35 $\lambda D[W/mK]=0,035$ (ecofriendly) (20cm). Covered with wind resistant plate "Knauf GTS-9". The construction piece is full of thermal film and special rupture resistant plate. Outside interior – 125x26 mm A class pine tree siding (thermowood).

6. Roof

Dried, calibrated wood (45X245) support construction has an air gap. On top there are 2 layers of humidity resistant plate. Thermal insulation – 250 mm NATURBOARD 35 $\lambda D[W/mK]=0,035$ (ecofriendly).

The inner side is covered with thermal film, while the outside with wind resistant film ("Dupont Tyvek"). Roof covering: double layer bitumen heated cover.

7. Floor

Metal subframe, dried, calibrated wood (45x195) support construction is filled with NATURBOARD 35 $\lambda D[W/m-K]=0,035$ (20cm) + "Isover" RKL50 (5cm). Both interior and exterior is supported with 22mm thickness OSB 3 plate. Lower half is water-proof.

8. Internal partitions

Dried, calibrated wood (45x75) support construction is filled with mineral wool for acoustic reasons. Supported from inside and outside with rupture resistant plates.

9. Windows

Warm aluminum profile window frames with a double glass packet (three glass layers). Doors with push-down handle, aluminum threshold and can be locked.

10. Terrace

The house bottom frame is made from impregnated (deep impregnation method) wood. Terrace is made of coniferous thermowood with grooves and screwed with special conical wood screws. Includes metal subframe.

INDOOR INTERIOR

11. Walls

Plastered (putty) and painted maximum resistant class washable matt paint. Color – warm white & dark grey. Bathroom decoration – limestone tiles 600x600 dark grey (matt).

12. Ceiling

Plastered (putty) and painted with white matt paint.

13. Floor

Natural oak floor deck.

Bathroom decoration – limestone tiles 600x600 dark grey (matt). Antistatic carpet cover on entresol and stairs.

ENGINEER PARTS

14. Electricity

Front panel with 220V power sockets + 2 pcs outside. LED track lighting system. Electric radiator in bathroom, electric ventilator. Carbon fiber floor heating system with programmable regulators (wi-fi control). Made by "ABB", "SIEMENS".

15. Sanitary ware / Plumbing

Shower, wash basin, toilet, shower faucet, water heating, ventilation system.

Made by "JIKA", "GROHE" and "LAUFEN".

FURNITURE

16. Furniture

Kitchen furniture with sink, integrated fridge. Also includes all other kitchen equipment.

Inside stairs, entresol railings.

Made by Siemens, Franke, Electrolux, Bosch, or AEG.

Devices

1. Wall lighting

"PHILIPS" LED IP20 or similar



2. Ceiling lighting

"PHILIPS" LED IP20 or similar



3. Bathroom lighting

5,5W 12X12 3000K
LED
Max. 5,5W
IP20



4. Dining area lighting

- LED
- Max. 60W
- Material – metal



5. Outdoor lighting

- LED
- IP65



6. Lighting control

"JUNG"



7. Water heater

80 liters
Ariston or Electrolux or similar



8. Towel dryer

Elonika or similar



9. Heating system

- Carbon heating film
- 80 W/m²
- Wi-fi control



10. Shower doors

JIKA or Ravak or similar



11. Shower equipment

GROHE thermostatic shower mixer



12. Toilet bowl

LAUFEN



13. Wash basin

LAUFEN with cabinet



14. Faucet

GROHE



15. Shower tray

RAVAK or JIKA or similar



16. Silent bathroom ventilation fan

- Soler & Palau or similar
- Ultra-plated exhaust design
- humidity sensor



17. Ventilation system

- Electrolux or Mitsubishi
- Smart wi-fi control



Kitchen equipment

18. Furniture

- Custom HOMM made Complete kitchen, which includes scratch-resistant worktop, shelves, drawers, sink bowl, wash-basin mixer tap and water-trap.
- Smooth-running drawers with drawer stops.



19. Hob

- Siemens or Electrolux
- Induction hob for your hot meals.



20. Oven

- Siemens or Electrolux
- Electric oven with child-safety door lock.



21. Refrigerator

- Siemens or Electrolux
- Fridge with a freezer, integrated LED light technology. The door can be opened on the right or left side.



22. Oven hood

- Electrolux or AEG
- An extractor hood with all the basic functions you need.





Any questions?

Contact us:

+370 616 94800

welcme@homm.space