



HOMM
STUDIO

ABOUT STUDIO

STUDIO is a special energy-efficient house that can become a cosy home for a family. The modern utility infrastructure in the house will optimize energy consumption at any time of the year.

This cleverly designed house with lofts on both sides is suitable for a family of four for permanent living. However, it is large enough for a group of six for an overnight stay.

STUDIO is a warm house, equipped with everything you need for a year-round permanent living. Manufacturer's warranties are provided for the equipment and appliances throughout all of Europe.

STUDIO may look small from the outside, but due to every detail carefully selected in the designing stages it feels spacious inside. This model is suitable to serve as a holiday home, a summer house or as a permanent residence.

Just like all HOMM models, STUDIO's living room has large doors opening up onto a spacious terrace, extending your living space when the weather is warm.

WHAT MAKES HOMM SPECIAL



Thermowood exterior cladding

No need to repaint, reoil – exterior doesn't need any care for decades!
100% ecofriendly.



Aluminum (3 glass layers) window frame

Warm, strong and longlasting.



Carbon floor heating system with wi-fi thermostat

You will be able to control Your heating system despite of being far away!



Natural OAK flooring

Special construction for heated floors.



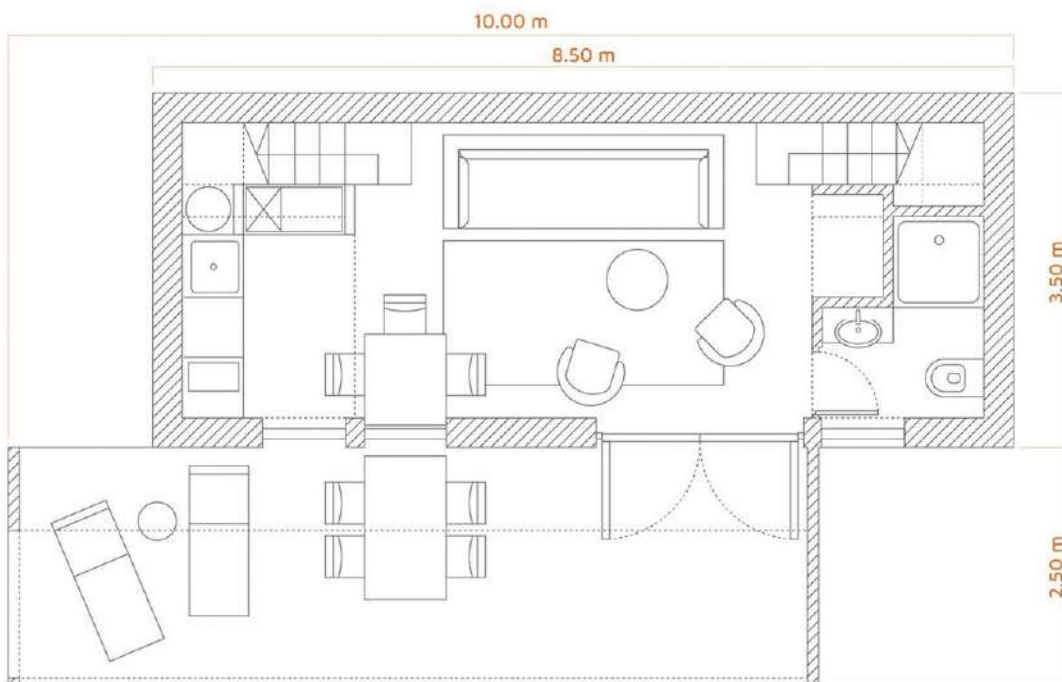
Highly efficient heat recovery ventilation system

With SMART controllers.



Smart house system

Controls lighting, air ventilation, heating systems and more.



GENERAL INDICATORS

1. Building type

Modular building

2. Parameters

No. of people in house:

4 (permanent living) **or 6** (sleeping overnight)

850 cm (length) X **350 cm** (width) X **385 cm** (height);
Building area (outer perimeter): **30,00 m²** (without terrace)

Floor area: **20,50 m²** (without entresol);

Floor area: **28,30 m²** (including entresol);

Terrace area – **18,82 m²**.

Inner height – **335 cm** (from floor to ceiling), 205 cm to entresol.

3. Weight

Standard: **9.900 Kg**

(empty, with inside and outside decorations, without terrace)

With interior equipment: **13.150 Kg**

Indicator can differ +/- 5%

4. Thermal resistance

- Walls: $U = 0,15 \text{ W/ m}^2 \text{ K}$

- Roof: $U = 0,14 \text{ W/ m}^2 \text{ K}$

Given minimal indicators.

CONSTRUCTION DETAIL DESCRIPTION

5. Walls

Dried, calibrated wood (45x145+45x45) support construction is filled with Knauf mineral wool NATURBOARD 35 $\lambda D[W/mK]=0,035$ (ecofriendly) (20cm). Covered with wind resistant plate "Knauf GTS-9". The construction piece is full of thermal film and special rupture resistant "Knauf Diamant" plate. Outside interior – 125x26 mm A class pine tree siding (thermowood).

6. Roof

Dried, calibrated wood (45x245) support construction has an air gap. On top there are 2 layers of "Durelis Popuilar" humidity resistant plate. Thermal insulation – 250 mm NATURBOARD 35 $\lambda D[W/mK]=0,035$ (ecofriendly). The inner side is covered with thermal film, while the outside with wind resistant film ("Dupoint Tyvek"). Roof covering: double layer bitumen heated cover.

7. Ceiling

Metal subframe, dried, calibrated wood (45x195) support construction is filled with NATURBOARD 35 $\lambda D[W/mK]=0,035$ (20cm) + "Isover" RKL50 (5cm). Both interior and exterior is supported with 22mm thickness OSB 3 plate. Lower half is water-proof.

8. Internal partitions

Dried, calibrated wood (45x75) support construction is filled with mineral wool for acoustic reasons. Supported from inside and outside with "Knauf Diamant" plates.

9. Windows

Warm aluminum profile window frames with a double glass packet (three glass layers). Doors with push-down handle, aluminum threshold and can be locked.

10. Terrace

The house bottom frame is made from depth method impregnated wood. Terrace is made of coniferous thermowood with grooves and screwed with special conical wood screws. Includes metal subframe.

INDOOR INTERIOR

11. Walls

Plastered (putty) and painted maximum resistant class ceramic base washable matt paint. Color – warm white & dark grey. Bathroom decoration – limestone tiles 600x600 dark grey (matt).

12. Ceiling

Plastered (putty) and painted with white matt paint.

13. Floor

Natural oak floor deck.

Bathroom decoration – limestone tiles 600x600 dark grey (matt). Antistatic carpet cover on entresol and stairs.

ENGINEER PARTS

14. Electricity

Front panel 12 pcs of 220V power sockets + 2 pcs outside, 5 zone lighting control. Lighting transformers, LED track lighting system. Electric radiator in bathroom, electric ventilator. Carbon fiber floor heating system with programmable regulators (wi-fi control). Made by "ABB", "SIEMENS".

15. Sanitary ware / Plumbing

Shower, wash basin, toilet, shower faucet, water heating, ventilation system.

Made by "JIKA", "GROHE" and "LAUFEN".

FURNITURE

16. Furniture

LMDP kitchen furniture with integrated heater and sink, integrated fridge, produced by "IKEA".

Inside stairs, entresol railings. Also included all kitchen equipment.

Made by "SIEMENS", "FRANKE".

Devices

1. Wall lighting

„PHILIPS“ LED IP20



2. Ceiling lighting

„PHILIPS“ LED IP20



3. Bathroom lighting

FUEVA 1 5,5W 12X12 3000K

- LED
- Max. 5,5W
- IP20



4. Dining area lighting

- LED
- Max. 60W
- Material – metal



5. Outdoor lighting

„LUCIDE BOOGY“

- LED
- IP65



6. Lighting control

„JUNG“



7. Water heater

ARISTON VELIS EVO 80
Made in Italy



8. Towel dryer

„Elonika“ EE 370 SLMP



9. Heating system

- Carbon Heating Film „Dimat“
- 80W/m²;
- Wi-fi control



10. Shower doors

JIKA CUBITO PURE 90X195 MATT



11. Shower equipment

„GROHE GROHTHERM 800 AND TEMPESTA II“



12. Toilet bowl

LAUFEN PRO NORDIC



13. Wash basin

LAUFEN PRO S COMPACT 55X38 WITH CABINET



14. Faucet

„GROHE BAUEDGE“



15. Shower tray

„RAVAK“ GALAXY PERSEUS PRO-90 FLA



15. Bathroom ventilation fan

Soler & Palau (SILENT-100 CHZ):

- Ultra-plated exhaust design
- humidity sensor



16. Ventilation system

EPVS-200 Electrolux

- adjustable timer



Kitchen equipment

17. Furniture

„IKEA“ KNOXHULT 180x61x220 cm

- Complete kitchen, which includes scratch-resistant worktop, shelves, drawers, sink bowl, wash-basin mixer tap and water-trap.
- Smooth-running drawer with drawer stop.



18. Hob

„IKEA“ MÖJLIG

- Induction hob for your hot meals. 5 year guarantee.



19. Oven

„IKEA“ GÖRLIG

Electric oven with child-safety door lock. 5 year guarantee.



20. Refrigerator

„IKEA“ SVALKAS

- 5 year guarantee.
- Fridge with 3 adjustable shelves and a freezer, integrated LED light technology. The door can be opened on the right or left side.

Good to know -

Energy consumption: **151 kWh/year**

Net volume fridge: **109 l**

This product bears the CE mark.



19. Oven hood

„IKEA“ UTDRAG

An extractor hood with all the basic functions you need.





Any questions?

Contact us: